

## Escape room

There are two versions of the game. Each team needs to have both versions. To do this, assign half of your team version A and half version B.

Version A is [here](#)

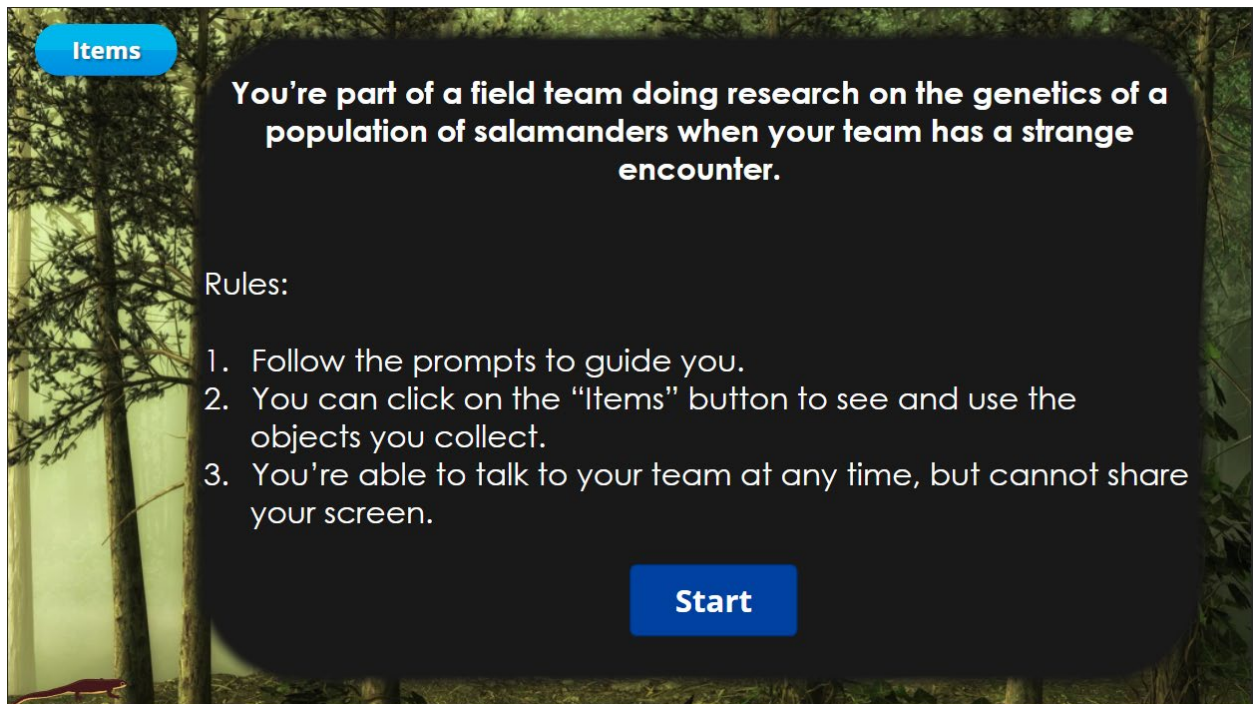
Version B is [here](#)

The game has sound, so it's recommended that users wear headphones.

It's up to you whether you give them hints.

## Answers to Puzzles

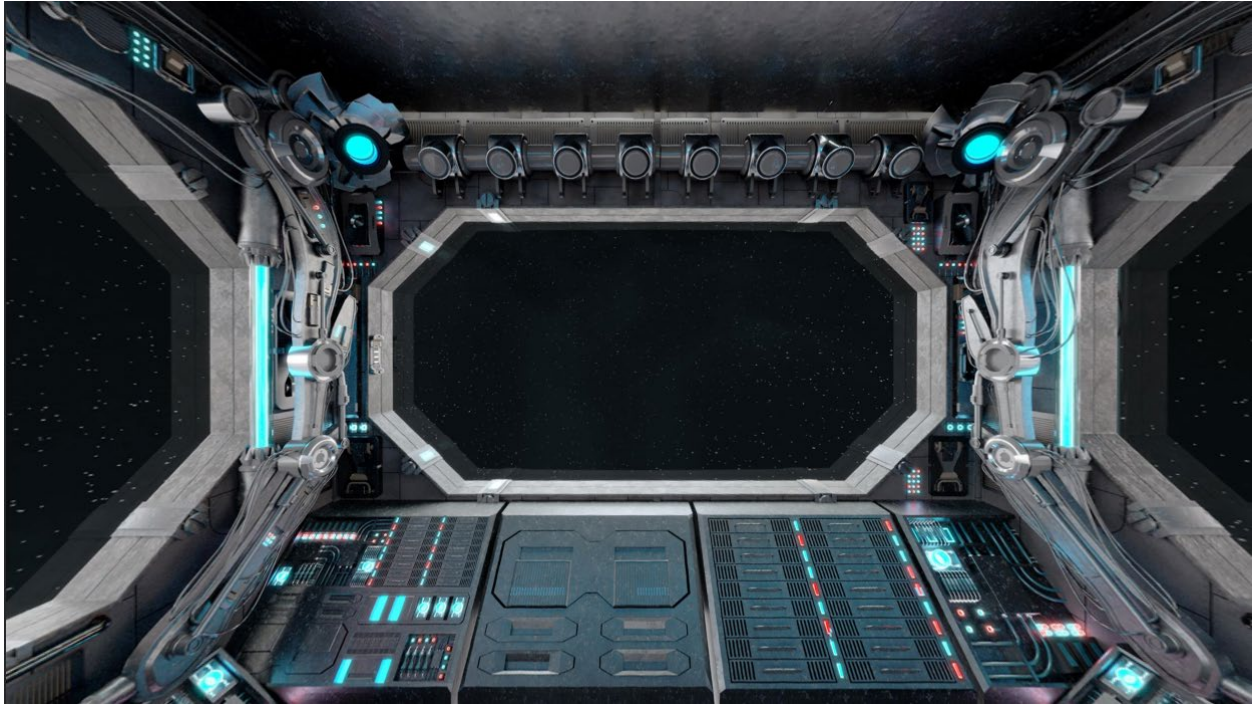
Press Start to continue



Click the walkie to continue



This is a 360 degree image. To navigate, click and swipe or spin the image. Users have to release the mouseclick to hover for hotspots.



The users have different answers here. They have to describe the arrows to those using the other version. The cursor will not change to a finger to indicate an object is interactive, but nothing bad happens if they click the wrong place.

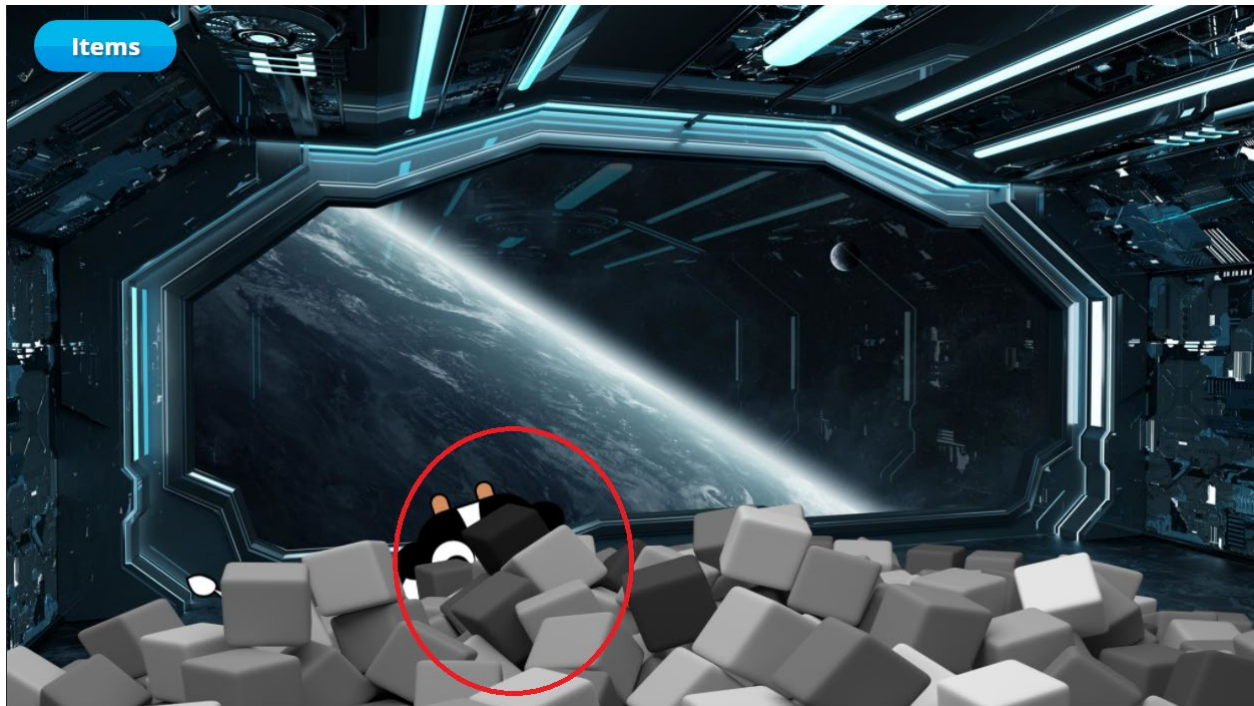
This is correct for 'A' in purple,



Correct B



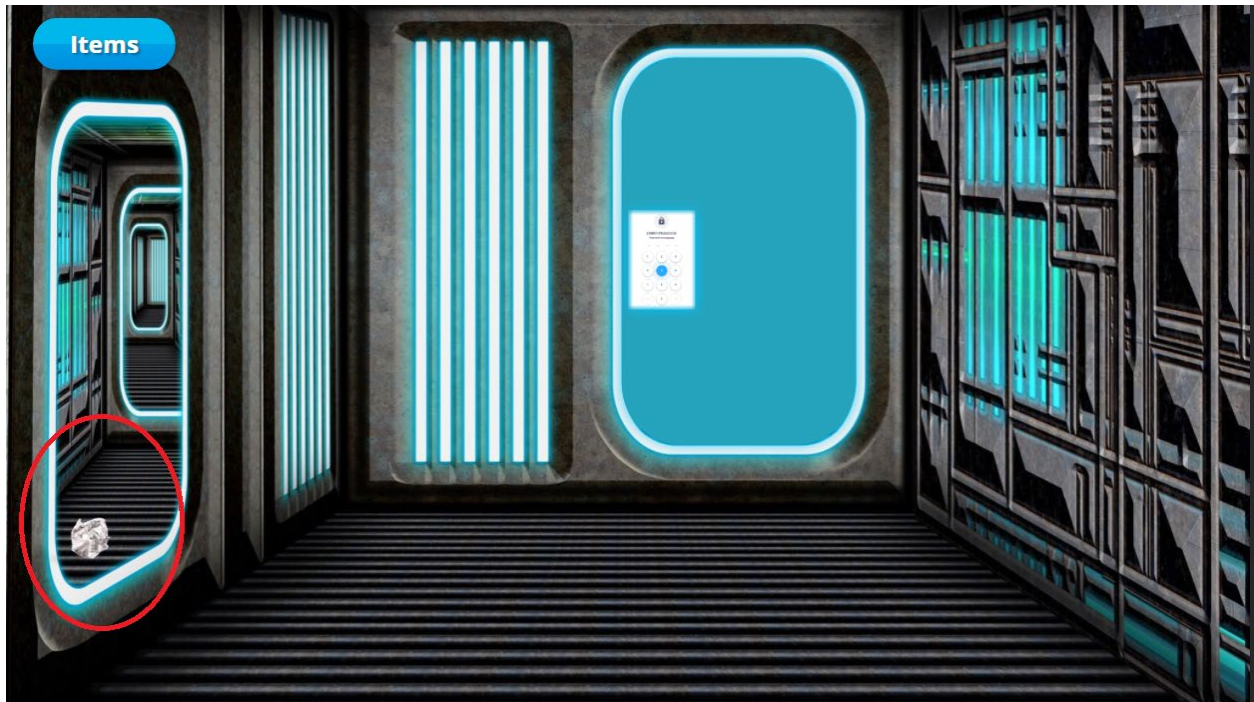
Click the cow



Click the paper

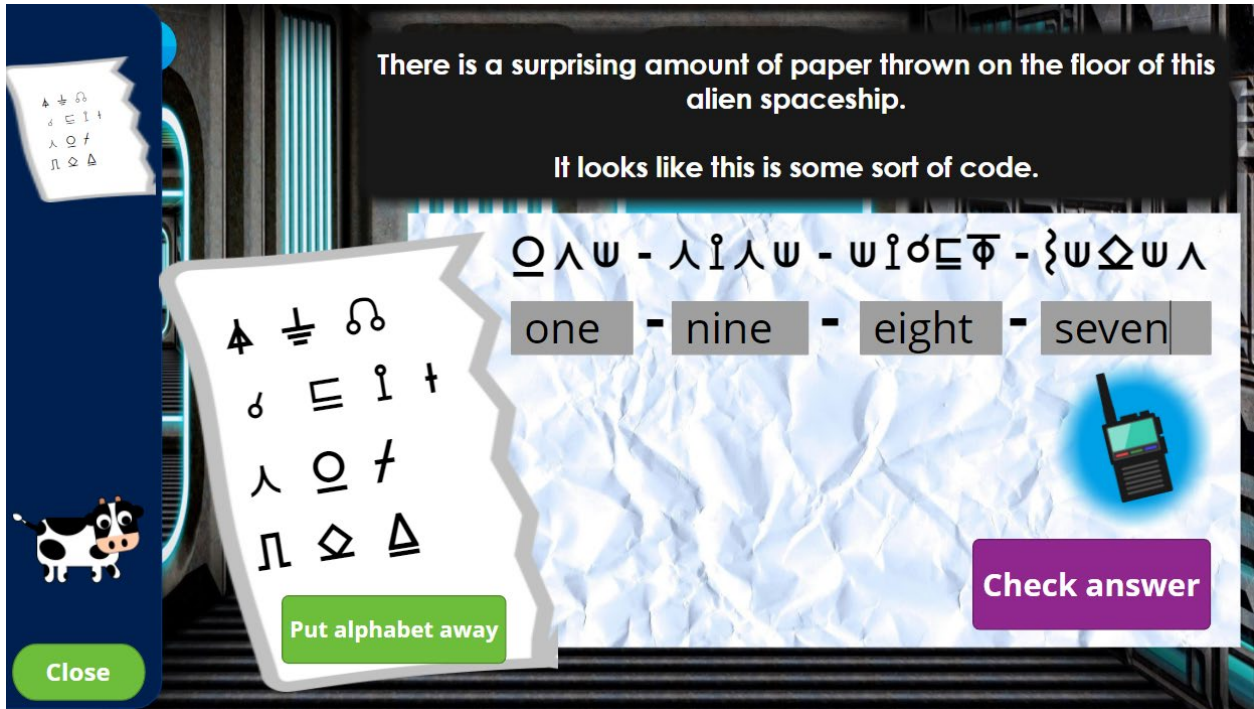


Click this paper



They will need to click their items and select the sheet to see the cipher (note, the English alphabet has been added to the cipher in game). The teams have different halves of the alphabet to solve the puzzle. The correct answers are shown and are the

same for both versions. If they type this and it's still failing, check that they are not using spaces.

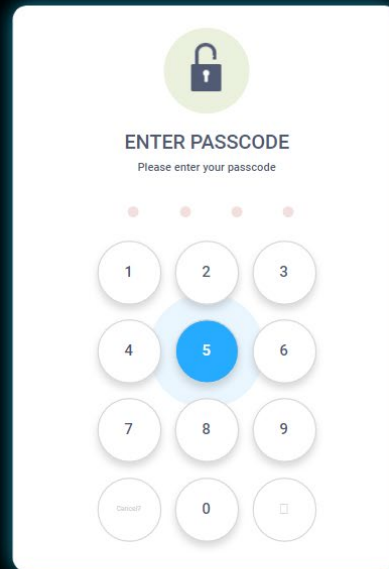


The full cipher is here:

△ ≡ Ω	⊕ Ψ ∫
<u>A</u> B C	D E F
σ ≡ ι †	ρ ∪ ∩
<u>G</u> H I J	K L M
λ ⊙ †	Ϡ † ζ φ
<u>N</u> O P	Q R S T
∩ ⊙ △	⊕ † ×
U V W	X Y Z

To access the keypad, they need to click on it. It can be found on the closed door. The Passcode is 1987 this is the same for both versions.

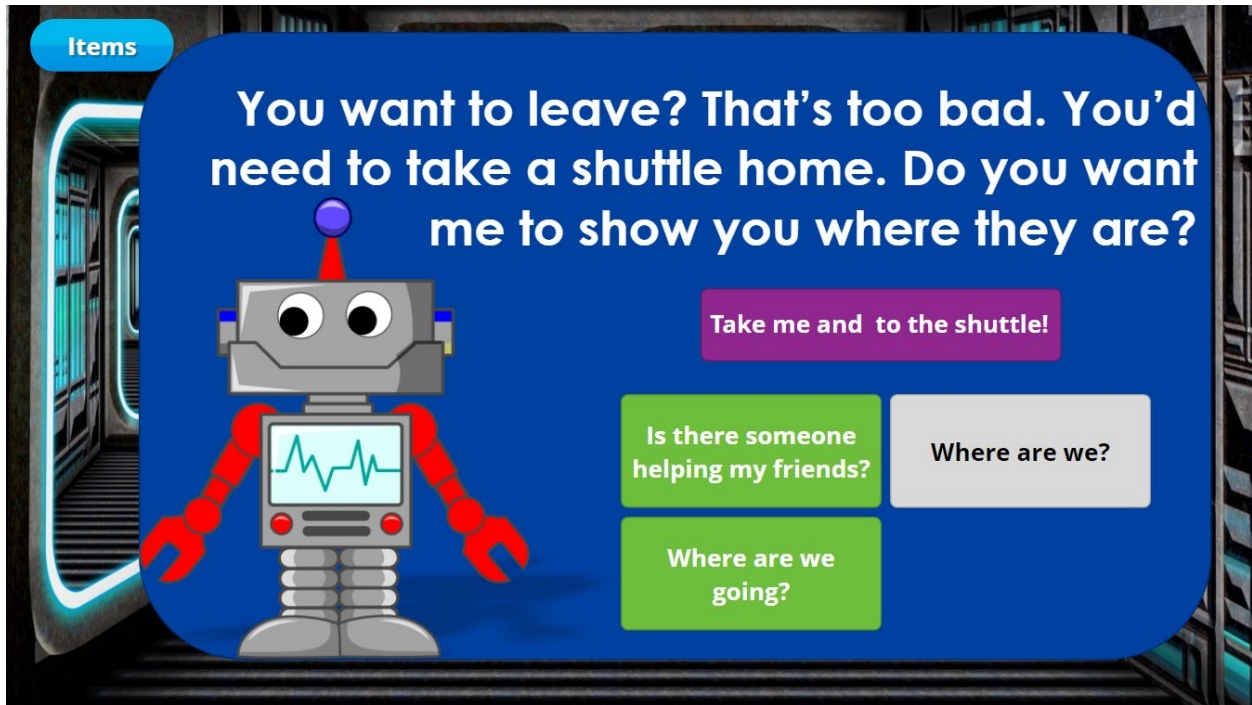
**It looks like this requires a passcode... Use the "X" in the top right corner to go back if you aren't sure yet.**



Click the robot



To move on, they need to ask how to get home and select the purple option asking about the shuttle



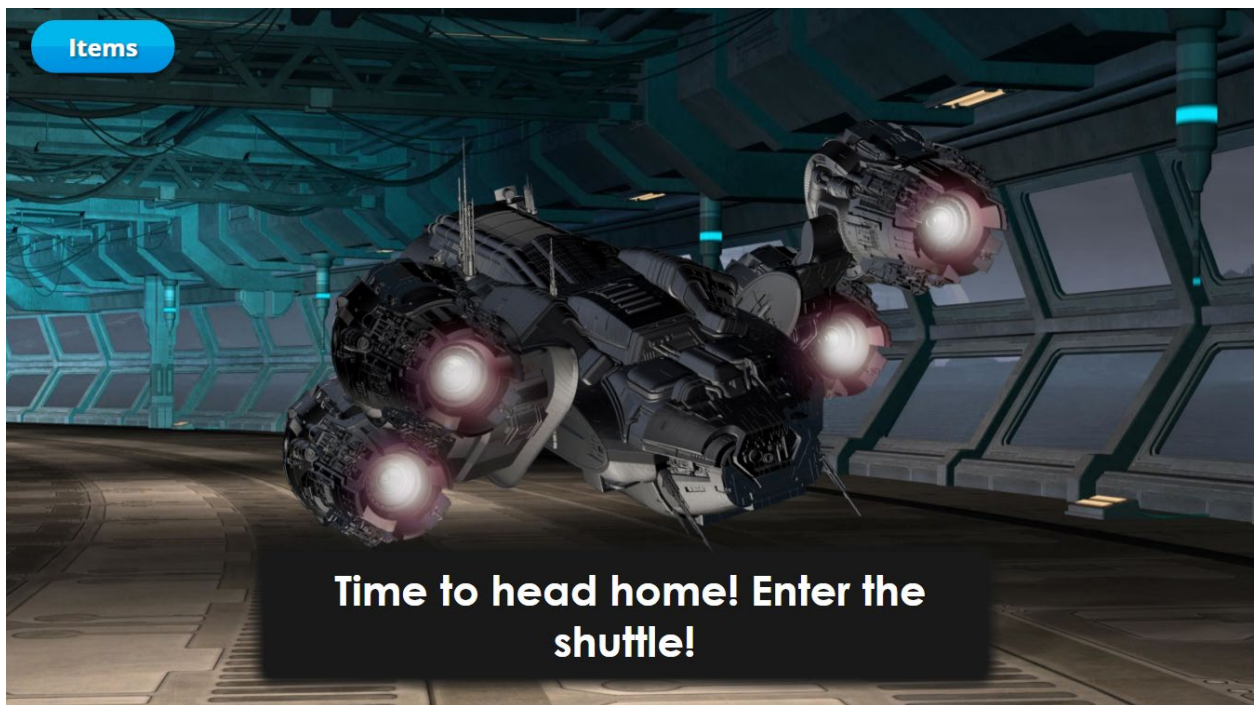
This is another 360-degree image. If they select the wrong way, it tells them. The correct option will move them to the next slide. There's no trick here. Some people just struggle with left and right 😊







Click the shuttle to advance



There's no key in the room. They need to select their items and click the robot. If they don't figure this out in 30 seconds, the game automatically advances.



The answers are different here again. It's asking about the robot the other team sees.

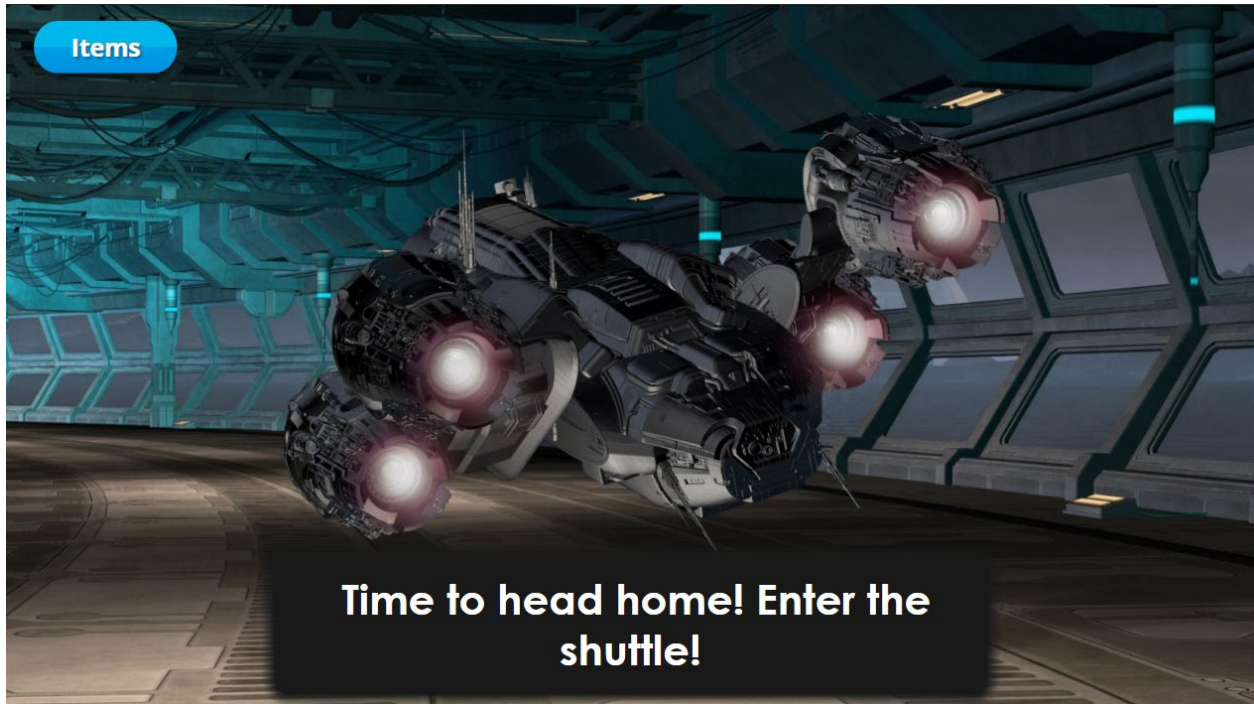
Answers for Team 'A'



Answer team b. the other options for arms are "silver" and "gray". (note, there is sometimes an issue with it not registering the solutions. If you encounter this, have the users click anywhere on the screen before asking for the key)



Click the shuttle to finish the game!



\*\*\*While this can be completed whole group, if you feel your cohort is too big (6+ people) you can split them into two breakout rooms. Just be sure that each breakout has both versions. Teams and Zoom have excellent tutorials on how to do this:

[Teams](#)

[Zoom](#)